




+27 11 237 9890  
info@taropa.co.za  
www.taropa.co.za

BUSINESS TO BUSINESS  
CHANNEL DEVELOPMENT PARTNER

**TAROPA**  
TECHNOLOGIES





# About our Company

Taropa Technologies is a proud Level 1 B-BBEE contributor and a leading business solutions aggregator in Office Automation and Security Solutions. We provide high-quality products, professional services, and value-added support to our dealer network across Southern Africa.

Since our establishment in 2007, Taropa has built a deep understanding of client needs and market dynamics, adapting to ever-changing challenges to ensure seamless operations.

We stay ahead by keeping up with the latest product innovations, user trends, and service requirements. Our solutions are designed around our clients' needs, complemented by flexible financing options, service level agreements, and technical and sales support – enabling our partners to thrive in their respective markets.

As a responsible corporate citizen, Taropa is committed to environmental sustainability, good governance, and community upliftment. These principles form the foundation of our philosophy, guiding us to make a meaningful impact where we operate.

Our greatest asset is our dedicated team, whose expertise and commitment enhance every aspect of our business. Together, we foster a proactive and innovative environment that distinguishes Taropa in the marketplace.

At Taropa, forward-thinking, integrity, and reliability drive our success. We remain committed to empowering our clients and partners, building on our legacy of excellence in Office Automation.

**TAROPA**  
TECHNOLOGIES

## Professional Services

# What We Offer



### Technical Services

Taropa Technologies provides comprehensive on-site and remote technical support for all Brother devices, ensuring seamless operations with minimal disruptions for our clients.



### Training

Taropa offers certified technical training on all devices, empowering technicians with the skills needed to efficiently resolve any customer technical issues.



### Warranty Assistance

Our service team streamlines warranty services and claims for all eligible Brother devices, delivering a hassle-free experience that helps clients effectively manage their equipment throughout its lifecycle.

## We're Here for You

## Value-added Support



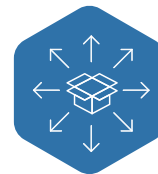
### Sales

The Taropa team is dedicated to delivering exceptional customer service, offering comprehensive support to surpass client expectations and build enduring partnerships.



### Marketing

Taropa's marketing department actively supports partners by managing reward programs and helping them leverage available portals to maximise engagement and drive success.



### Logistics

Taropa partners with skilled logistics experts to ensure timely, accurate deliveries, offering clients dependable support for seamless operations.

# MPS Monitor

MPS Monitor is the ultimate solution for remotely monitoring and managing printers, enhancing the efficiency and profitability of Managed Print Services.

With our Data Collection Agent, we seamlessly capture data from printers of any brand and model. Our robust cloud platform processes, archives, and provides access to critical data for business operations, while our Application Programming Interfaces (APIs) allow for easy integration of printer data into user applications.

## Benefits

- **Comprehensive Multi-Brand Monitoring:** Manage and monitor all printer models compliant with MIB standards, regardless of brand
- **Enhanced Security:** Safeguard the privacy and confidentiality of critical business information, including customer details, contracts, costs, volumes, and supply levels
- **Seamless Integration:** Connect with external systems to fully automate invoicing processes
- **Continuous Alert Tracking:** Receive real-time updates on alert statuses and consumable deliveries
- **Automated Supply Processes:** Streamline consumables procurement through fully automated supply management
- **Predictive Analytics:** Benefit from insights into projected volume and consumption, with consistent comparison between forecasts and actual data
- **Effortless Data Collection:** Eliminate the need for user contact or scheduled on-site visits to gather printer-related data.



[www.mpsmonitor.co.za](http://www.mpsmonitor.co.za)

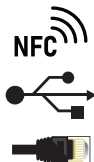


# Reliable Laser Printing

# Solutions for Business

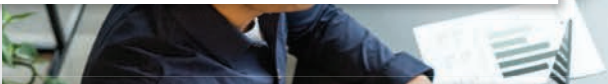
Brother laser printers combine Japanese design quality, efficiency and flexibility. Designed for maximum productivity, our all-in-one printers feature continuous innovation and cutting-edge technology.

BLACK & WHITE



## MFC-L6915DN Network 4-in-1 Black & White Laser Printer

- Fast print speed up to 50 ppm
- USB, Gigabit Wired Network and NFC Connectivity
- Automatic 2-sided Print, up to 24 sides per minute
- Automatic Document Feeder (Up to 80 sheets)
- 17.8 cm Colour LCD Touchscreen
- 520 Sheet paper tray input expandable up to 2,600 sheets\*



BLACK & WHITE



## MFC-L5715DW Wireless 4-in-1 Black & White Laser Printer

- Fast print speed up to 48 ppm
- Wired, Wireless, Wi-Fi Direct and USB Connectivity
- Automatic 2-sided Printing, up to 24 sides per minute
- Automatic Document Feeder (Up to 50 sheets)
- 8.8 cm Colour LCD Touchscreen
- 250 Sheet paper tray input expandable up to 1,290 sheets\*

COLOUR

## MFC-L9630CDN Network 4-in-1 Colour Laser Printer

- Fast print speed up to 40 ppm
- USB, Gigabit Wired Network and NFC Connectivity
- Automatic 2-sided Print, up to 28 sides per minute
- Auto Document Feeder (Up to 100 sheets)
- 17.6 cm Colour LCD Touchscreen
- 520 Sheet paper tray input, expandable to 2,600 sheets\*



\*Optional paper trays or tower tray needed. Additional purchase required.



# Power your business with the latest in laser printing technology



Brother International South Africa, a regional sales office of Brother Industries, Ltd. (Japan), has been a trusted leader in innovative technology solutions since 1970. Serving South Africa and Sub-Saharan Africa, Brother specialises in printing, scanning, labelling, sewing, and crafting technologies for home, SME, and corporate markets.

Guided by its 'Customer First' philosophy, Brother is dedicated to meeting the diverse needs of its customers by providing reliable, high-quality products and services that enhance productivity and streamline workflows. Brother's advanced technologies are designed to optimise efficiency, reduce costs, and adapt to evolving business needs.

With a strong focus on innovation and 'work style transformation,' Brother consistently pioneers new advancements to ensure its solutions remain at the forefront of the industry. Brother is committed to delivering excellence and fostering success for businesses and individuals alike.

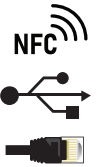
For more information, visit [www.brother.co.za](http://www.brother.co.za).

# MFC-L6915DN

## Network 4-in-1 Black & White Laser Printer

**AUTOMATIC DOCUMENT FEEDER (ADF)**  
up to 80 Sheets

**CONNECTIVITY**  
USB, Gigabit Wired  
Network and NFC



**DISPLAY**  
17.8cm Colour  
LCD Touchscreen

**FAST PRINT SPEED**  
up to 50 ppm

**INBOX SUPPLIES**  
**Inbox Toner**  
25,000 Page Yield  
**Inbox Drum**  
75,000 Page Yield

**INTERNAL MEMORY**  
2GB

**PAPER HANDLING**  
520 Sheet paper tray input  
expandable up to 2,600 sheets\*

**RMPV**  
Up to 16,000 pages



### Brother Original Supplies



**Replacement Toner**  
**TN3667XLP**  
25,000 Page Yield



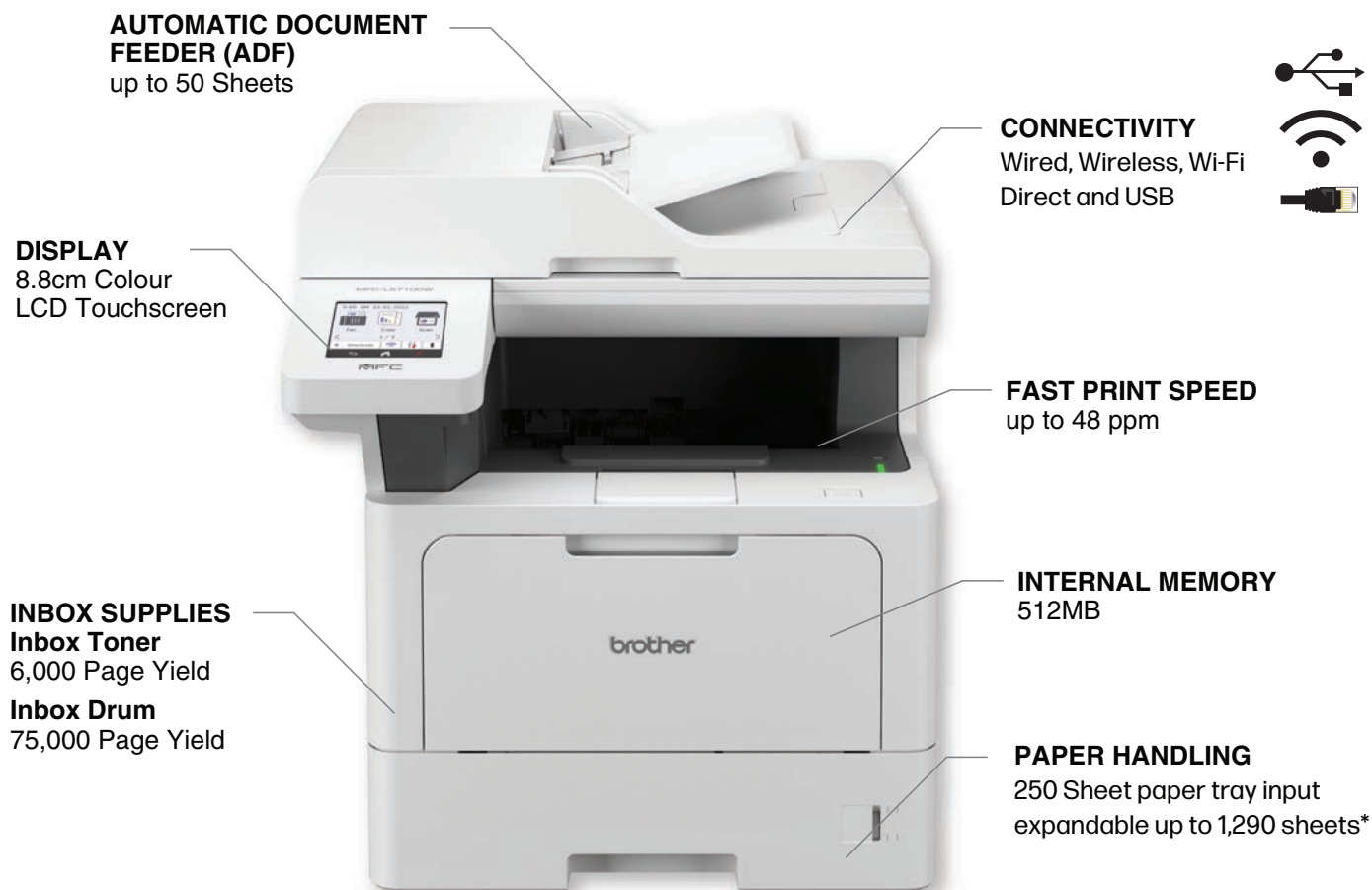
**Drum Unit**  
**DR3657P**  
Approx. 75,000 pages  
at 3 pages per job

### Brother 3 Year Warranty

Your Brother printer comes with a FREE 3-year warranty. To maintain optimal performance and warranty coverage, we recommend always using Brother Genuine Consumables.

# MFC-L5715DW

## Wireless 4-in-1 Black & White Laser Printer



**RMPV**  
Up to 5,000 pages

### Brother Original Supplies



**Replacement Toner**  
**TN3667XLP**  
25,000 Page Yield



**Drum Unit**  
**DR3657P**  
Approx. 75,000 pages at 3 pages per job



#### Brother 3 Year Warranty

Your Brother printer comes with a FREE 3-year warranty. To maintain optimal performance and warranty coverage, we recommend always using Brother Genuine Consumables.

\*Optional paper trays or tower tray needed. Additional purchase required.

# MFC-L9630CDN

## Network 4-in-1 Colour Laser Printer

**AUTOMATIC DOCUMENT FEEDER (ADF)**  
up to 100 Sheets

**DISPLAY**  
17.6cm Colour LCD Touchscreen

**CONNECTIVITY**  
USB, Gigabit Wired Network and NFC



**FAST PRINT SPEED**  
up to 40 ppm

**INTERNAL MEMORY**  
2GB

**INBOX SUPPLIES**  
**Inbox Toner**  
9,000 Page Yield (BK)  
6,500 Page Yield (C/M/Y)

**Inbox Drum**  
100,000 Page Yield

**PAPER HANDLING**  
520 Sheet paper tray input  
expandable up to 2,600 sheets\*

**RMPV**  
Up to 12,000 pages



### Brother Original Supplies

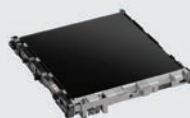


**Replacement Toner**

**TN874BKP**  
15,000 Page Yield (BK)  
**TN874CP/MP/YP**  
12,000 Page Yield (C/M/Y)



**Drum Unit DR871CP**  
Approx. 100,000 Pages at 3 pages per job



**Belt Unit BU800CL**  
Approx. 150,000 Pages at 2 pages per job



**Waste Toner WT800CL**  
Approx. 100,000 pages

### Brother 3 Year Warranty

Your Brother printer comes with a FREE 3-year warranty. To maintain optimal performance and warranty coverage, we recommend always using Brother Genuine Consumables.

# FLEXIBLE ASSET-BASED FINANCE SOLUTIONS

to help your business grow and improve cash flow



# Octopi

FINANCIAL SOLUTIONS

Our end-to-end finance solutions are made possible through long-standing relationships with banks, financial institutions, suppliers and insurance organizations. We partner with you in providing tailor-made solutions to your business needs, coupled with sound advice and quality service.

## WHAT WE OFFER



Rental Finance



System Efficiency



Soft Loan



Sale & Leaseback



Progress Payments



Flexible Payment Options



Split Payments



Competitive Rates



### Online Application

Our team assist you in completing the easy, online paperless application.



### Dealer Base Monitoring

The application comes with no obligation.



### Digital Signatures

There is a quick turnaround to provide feedback on the application.



The subsidiary companies in the Octopi Group offer a range of products for which financing is available.



Security



Access Control



Business Software Solutions



IT/Hardware



Data Management Solutions



Connectivity



Solar, batteries, inverters



Generators



Evergreen Solutions



Printing Office Automation



Telecoms



PABX

For more information contact us on +27 10 065 0970 or [enquiries@octopigroup.co.za](mailto:enquiries@octopigroup.co.za)  
[www.octopifin.co.za](http://www.octopifin.co.za)



+27 11 237 9890  
info@taropa.co.za  
www.taropa.co.za